



Technical Guide

Black box theatre dimensions

Floor

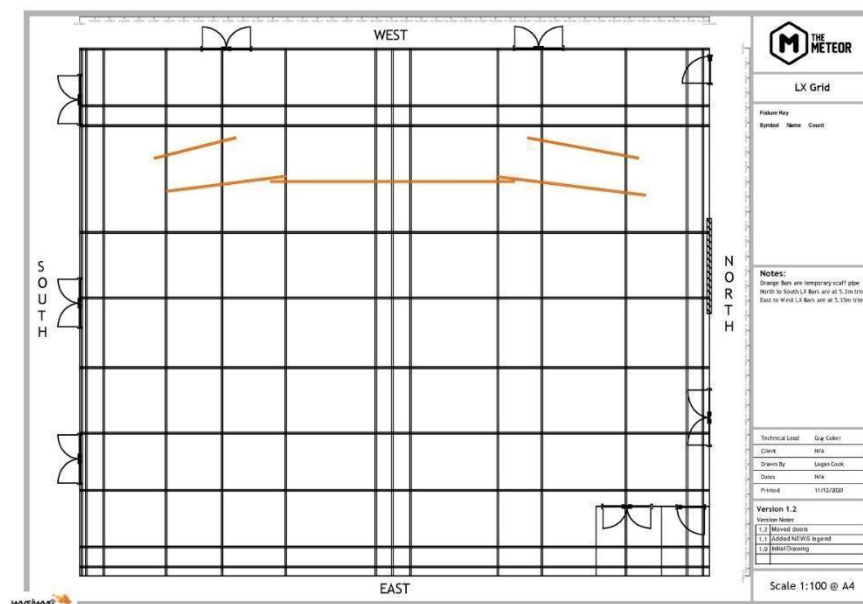
- North to South: 21m.
- East to West: 17m.

Structural beams

- North to South beams: 5.58m trim (these are upside-down U beams).
- East-to-West beams are not suitable for rigging.

Lighting bars

- North to South trim: 5.3m.
- East to West trim: 5.35m.



The lighting grid has fixed bars, and we can supplement this with extra scaff if needed.

Seating orientations

We have two 41-seat blocks available and one 50-seat block available for use. These are all fully moveable and can be used individually or in groups.

The 41-seat block has:

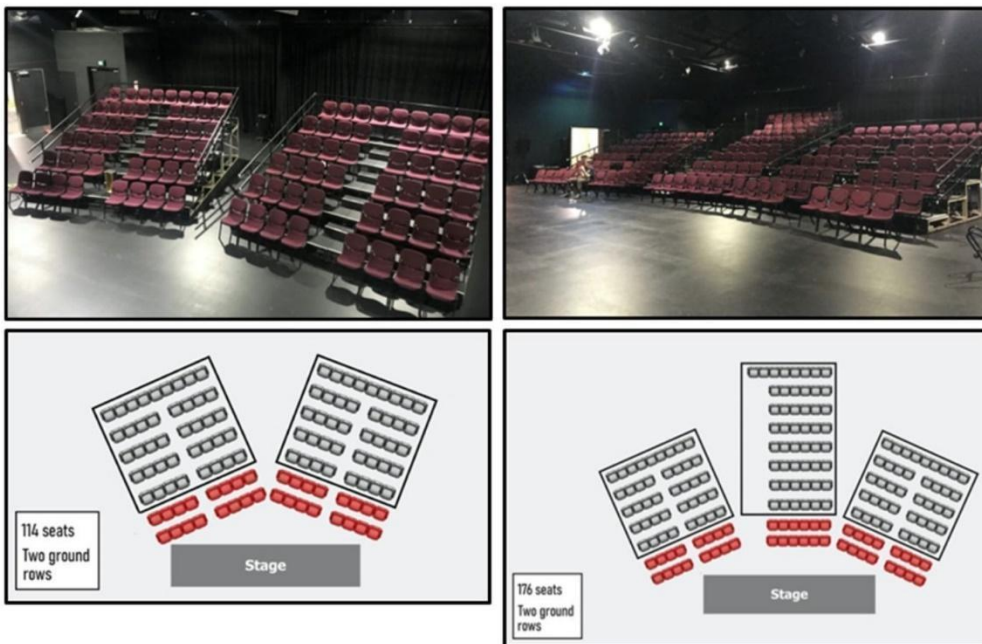
- 4 rows of 8 seats
- 1 row of 9 seats (top row)
- 1 ground row of 8 (49 seats total)
- Height: 1500mm; width: 4800mm; depth: 4500mm
- 300mm step between levels
- Both blocks are on wheels
- These can be easily moved by 2 people

The 50-seat block has:

- 7 rows of 6 seats
- 1 row of 8 seats (top row)
- 1 ground row of 6 (56 seats total)
- Height: 2450mm; width: 4130mm; depth: 7400mm
- 310mm step between levels
- 1 hour pack-in time with 4 people
- Once this block is in place, it is unable to move

Both seating blocks also have the option of adding an extra ground row of seating. This would bring the 41-seat block up to 57 seats total and the 50-seat block up to 62 seats total.

If you were to use all three seating blocks together, and the extra ground rows, then this would give you 176 seats. Please note that having three seating blocks is only possible in the standard rig and will incur an additional charge to set up.



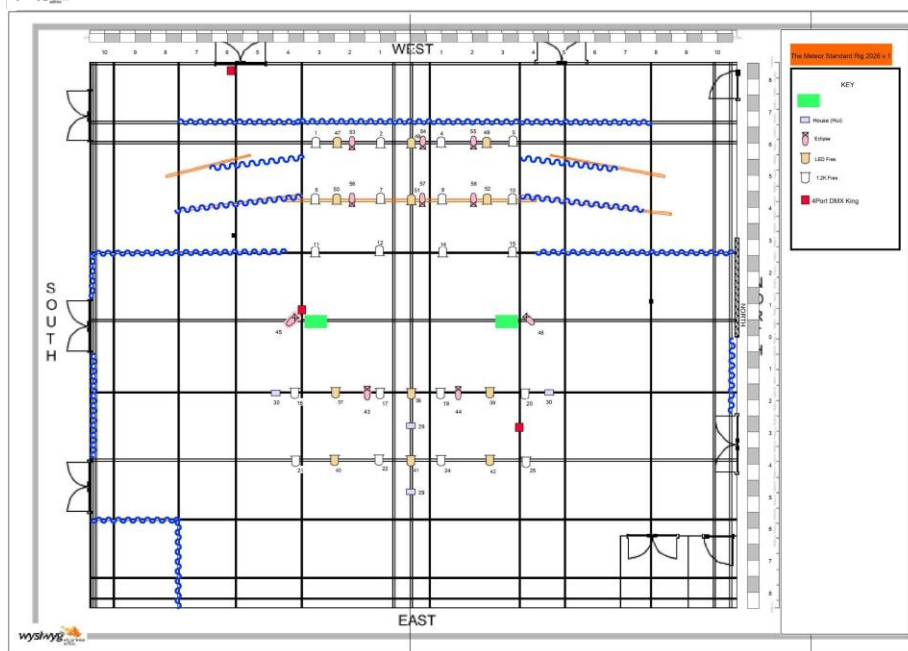
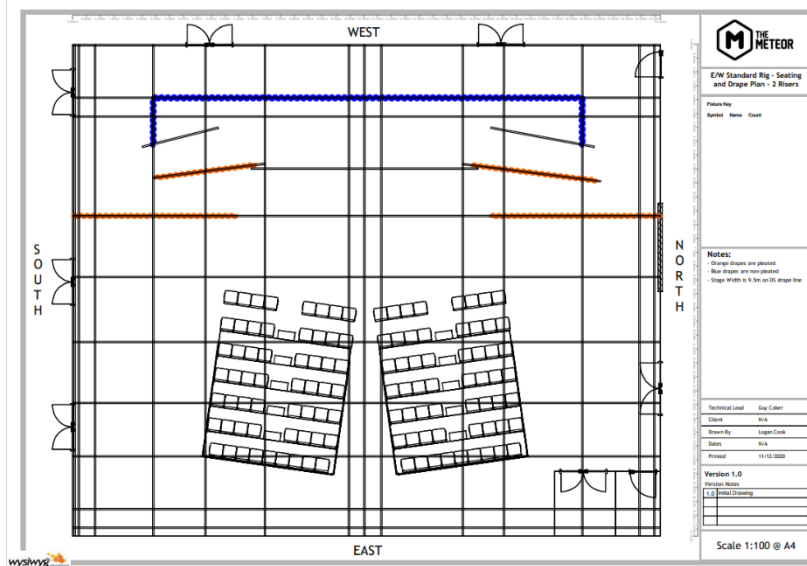
In total, we have 240 theatre chairs.

We also have large round tables that can be used to create a cabaret style configuration. The Meteor is licensed for a standing capacity of 350.

Alternatively, we can also create a smaller, more intimate, space for you e.g. there is a curtain track East to West in the center of the room which allows the space to be halved.

Standard rig

Although The Meteor is a flexible black box space, meaning that your stage orientation can be in any direction, the standard rig for the theatre is with the stage along our West wall and the seating block along our East wall.



Alternative layouts can be supplied on request.

If you're interested in deviating from the standard rig, then please let us know when enquiring for dates, and we can work with you to create a plan – this may increase your pack-in/out time needed.

The following technical equipment is included with your venue hire:

Lighting

Fixtures	Quantity	Notes
FREZNO ze-2 LED Fresnel RGBWAL	18	With barndoors Profile - TR16 (19 channels)
Eclipse Profile Zoom RGBAL	10	Profile - TR16 (18 channels)
FUSION PAR LED RGBW	6	
Selecon Fresnel – 1.2k	40	
Pacific Profile 14/35	6	
Pacific Profile 5/14	2	

Selecon PC – 1.2k	2	
Harmony PC – 1k	18	No barndoors
Strand SL Profile 15/32 – 600w	14	
Strand SL Profile 19 – 600w	2	
Strand SL Profile 26 – 600w	3	
PAR Wide 64	15	

Dimmers	Quantity	Notes
Theatre light 12 Channel – 32A	3	

Control Equipment	Quantity	Notes
MSI GF63 Thin Laptop	1	Runs Onyx Lighting Software
GrandMA3 onPC Command Wing	1	

Lighting Accessories	Quantity	Notes
Turtles	6	Wood, Black

Audio

Equipment	Quantity	Notes
Allen&Heath Zed12 FX Mixing Desk	1	6 Channel Analogue Console
MIDAS M32R Digital Mixing Desk	1	32 channels with 6 return sends
MIDAS DL16 Digital Stage Box	1	Must be used with MIDAS digital mixing desk
30m Audio Snake	1	24 inputs, 6 returns
Martin CDD Live 12 Speaker	2	Standard Rig
RCF HD 12 B Line Active Speaker	4	
Speaker Stands	4	
Shure SM58 Microphone	4	With mic clips
Shure SM57 Microphone	2	With mic clips
Sennheiser E614 Condenser Mic	2	With mic clips
Whirlwind DI Box	2	
Tall K&M Mic Stand	2	(two step boom)
Tall K&M Mic Stand	2	(single long boom)
Gravity Mic Stand	2	(short)

Cable Equipment	Quantity	Notes
Audio Snake – 30m	1	
Power/Signal Cable – 20m	4	
Power/Signal Cable – 10m	2	
3.5mm – stereo 6.5mm jack	2	
Cat6 – 50m	2	
Assorted XLR Cable		Contact technical team for availability of sizes

Access Equipment

Equipment	Quantity	Notes
Rechargeable Dingli MEWP	1	MEWP License required to operate

Scaffold Tower on wheels	1	Users must be 16+ & a Meteor technical staff member must be onsite.
--------------------------	---	---

Miscellaneous

Item	Quantity	Notes
Small Square Tables	4	
Trestle Tables	8	L: 1800 D: 750; Seats 6 People
Round Tables	8	D:1800; Seats 10 People
Round Tables	8	D:1500; Seats 8 People
Black Metal Stools	6	
Operator Chairs	3	
Wooden boxes & plinths		Contact technical team for availability of sizes
Clothes Iron	1	Located in the Green Room
Ironing Board	1	Located in the Green Room
Steamer	1	Located in the Green Room
Washing machine	1	Located in the Workshop Washing Powder not provided

The following technical equipment is not included with your venue hire and will come with a charge:

Playback

Equipment	Quantity	Notes
Macbook Pro 2015	1	\$150 +GST
Projector Screen - Front Projecting	1	H: 2700mm W: 4600mm
Panasonic 5k Projector	1	Screen + Projector \$350 + GST package for hire and installation
Blackmagic SDI-HDMI	1	
Blackmagic HDMI-SDI	1	
HDMI Cable – 1m	2	
SDI – 30m	1	
ATEM Digital Switcher	1	Price on request

Effects

Equipment	Quantity	Notes
Martin Jem Compact Hazer Pro	1	\$160 +GST for a week or \$50 +GST for a day
Small Smoke Machine	1	Price on request

Staging

We charge \$150 +GST for a full 8-deck stage, or \$20 +GST per deck for smaller stages.

Equipment	Quantity	Notes
Riser Deck – 1200mm x 2400mm	8	
Riser Deck – 1000mm x 2700mm	6	

Riser Leg 900mm	32	
Riser Leg 600mm	32	
Riser Leg 300mm	32	
Riser Steps	2	
Stage skirt 800mm	1	
Stage skirt 600mm	1	
Stage skirt 400mm	1	

Miscellaneous

Equipment	Quantity	Notes
50-inch TV with stand on wheels	2	\$50 +GST for a week, \$30 +GST for a day
36 inch TV with stand on wheels	6	Price on request
27 in TV with stand on wheels	2	Price on request
Black Lectern	1	\$50 +GST
Tablecloths		\$22 +GST each
Gaffer Tape	As required	\$18.50 +GST per roll
Electrical Tape	As required	Black, White, or Grey, price on request
Gel	As required	Range of Rosco & Lee colours, contact team for stock info and price quote

If your event requires any extra gear e.g. a larger PA, backline, different staging, we have some local suppliers who work with us to get you the best gear for a great price. Please let our technical team know if you would like a quote!