

### LX Grid

#### Fixture Key

Symbol Name Count

- Strand SL Profile 15/32
- Hui—house light
- Selecon Fresnel 1.2k (with barndoors)
- LED FusionPar Q XII 4 Ch (d)

#### Notes:

Orange Bars are temporary scaff pipe  
 North to South LX Bars are at 5.3m trim  
 East to West LX Bars are at 5.35m trim

- Dimmer Ch 1- 36
- Unused channels 3,8,13,31,32,33,34, 35
- LED address – Uni-verse 1

Technical Lead Guy Coker

Client N/A

Drawn By Logan Cook

Dates N/A

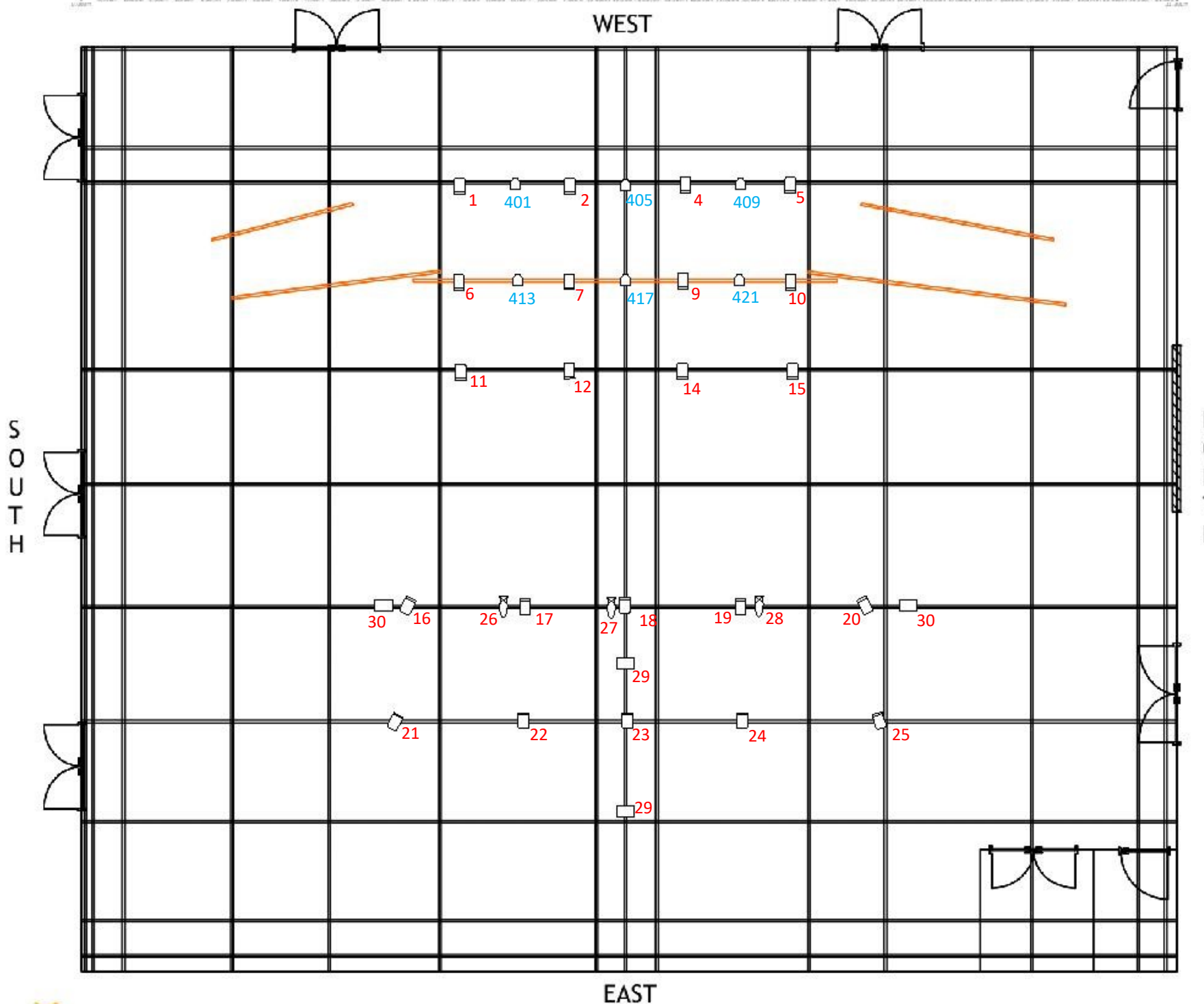
Printed 11/12/2020

#### Version 1.2

##### Version Notes

1.2	Moved doors
1.1	Added NEWS legend
1.0	Initial Drawing

Scale 1:100 @ A4



0.000m 0.500m 1.000m 1.500m 2.000m 2.500m 3.000m 3.500m 4.000m 4.500m 5.000m 5.500m 6.000m 6.500m 7.000m 7.500m 8.000m 8.500m 9.000m 9.500m 10.000m 10.500m 11.000m 11.500m 12.000m 12.500m 13.000m 13.500m 14.000m 14.500m 15.000m 15.500m 16.000m 16.500m 17.000m 17.500m 18.000m 18.500m 19.000m 19.500m 20.000m 20.500m 21.000m 21.200m



**E/W Standard Rig - Seating and Drape Plan - 2 Risers**

**Fixture Key**

Symbol	Name	Count
--------	------	-------

**Notes:**

- Orange drapes are pleated
- Blue drapes are non-pleated
- Stage Width is 9.5m on DS drape line

Technical Lead	Guy Coker
----------------	-----------

Client	N/A
--------	-----

Drawn By	Logan Cook
----------	------------

Dates	N/A
-------	-----

Printed	11/12/2020
---------	------------

**Version 1.0**

**Version Notes**

1.0	Initial Drawing

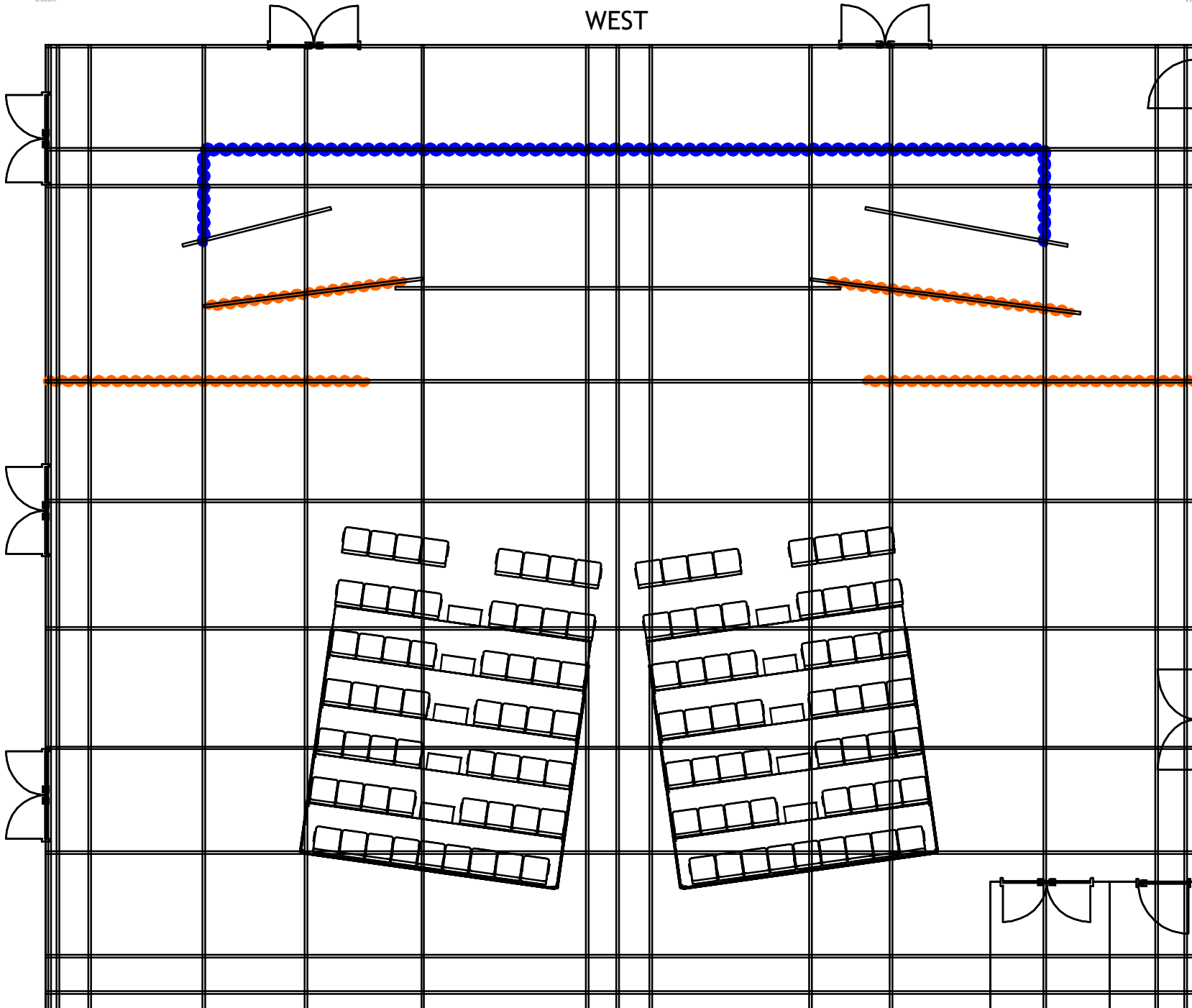
Scale 1:100 @ A4

SOUTH

NORTH

WEST

EAST



0.000m 0.500m 1.000m 1.500m 2.000m 2.500m 3.000m 3.500m 4.000m 4.500m 5.000m 5.500m 6.000m 6.500m 7.000m 7.500m 8.000m 8.500m 9.000m 9.500m 10.000m 10.500m 11.000m 11.500m 12.000m 12.500m 13.000m 13.500m 14.000m 14.500m 15.000m 15.500m 16.000m 16.500m 17.000m 17.500m 18.000m 18.500m 19.000m 19.500m 20.000m 20.500m 21.000m 21.200m

0.000m 0.500m 1.000m 1.500m 2.000m 2.500m 3.000m 3.500m 4.000m 4.500m 5.000m 5.500m 6.000m 6.500m 7.000m 7.500m 8.000m 8.500m 9.000m 9.500m 10.000m 10.500m 11.000m 11.500m 12.000m 12.500m 13.000m 13.500m 14.000m 14.500m 15.000m 15.500m 16.000m 16.500m 17.000m 17.500m 18.000m 18.500m 19.000m 19.500m 20.000m 20.500m 21.000m 21.200m



**E/W Standard Rig - Seating and Drape Plan - 3 Risers**

**Fixture Key**  
 Symbol Name Count

- Notes:**
- Orange drapes are pleated
  - Blue drapes are non-pleated
  - Stage Width is 9.5m on DS drape line

Technical Lead	Guy Coker
Client	N/A
Drawn By	Logan Cook
Dates	N/A
Printed	11/12/2020

**Version 1.0**  
**Version Notes**

1.0	Initial Drawing

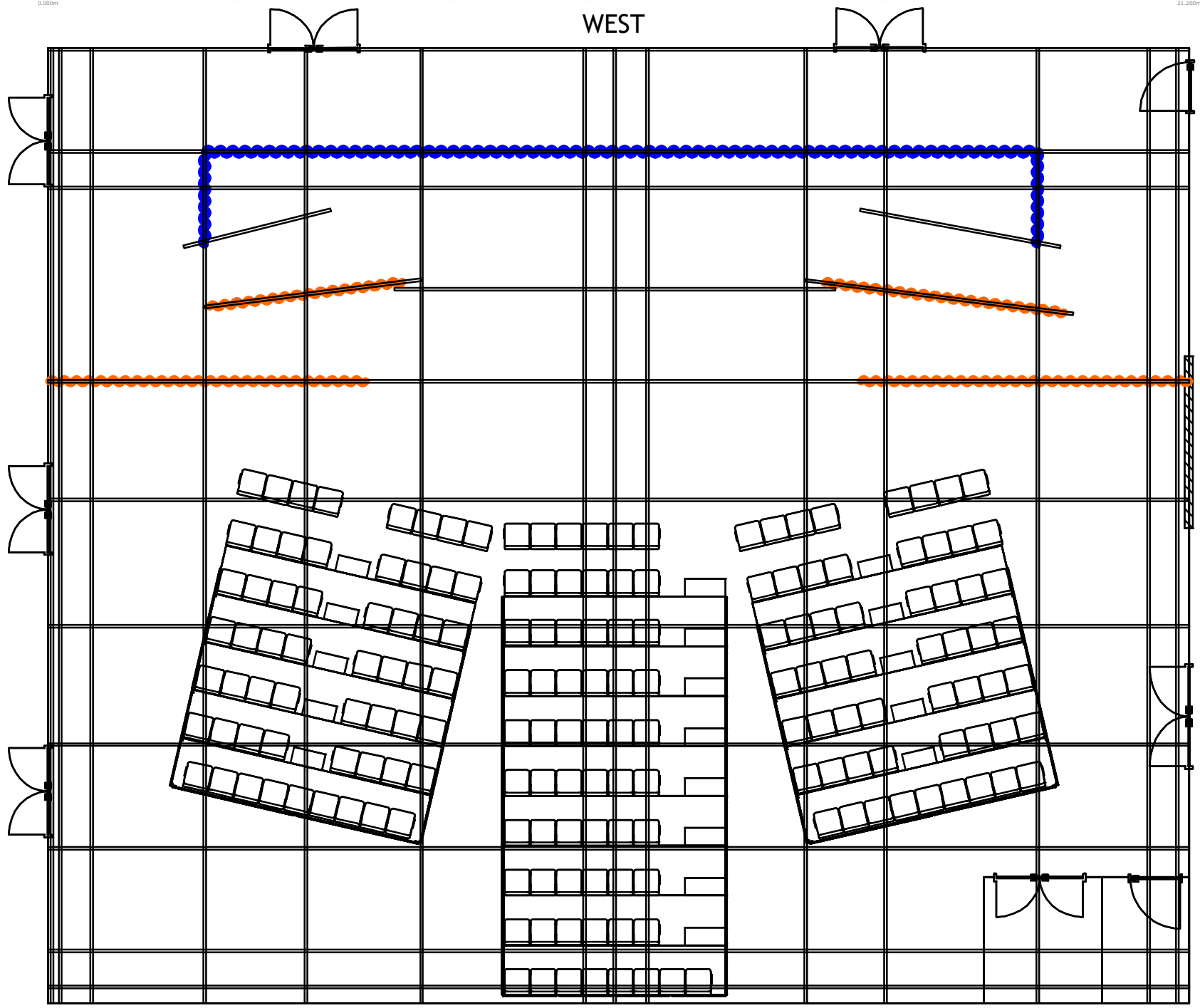
Scale 1:100 @ A4

SOUTH

NORTH

WEST

EAST



0.000m 0.500m 1.000m 1.500m 2.000m 2.500m 3.000m 3.500m 4.000m 4.500m 5.000m 5.500m 6.000m 6.500m 7.000m 7.500m 8.000m 8.500m 9.000m 9.500m 10.000m 10.500m 11.000m 11.500m 12.000m 12.500m 13.000m 13.500m 14.000m 14.500m 15.000m 15.500m 16.000m 16.500m 17.000m 17.500m 18.000m 18.500m 19.000m 19.500m 20.000m 20.500m 21.000m 21.200m

0.000m 0.500m 1.000m 1.500m 2.000m 2.500m 3.000m 3.500m 4.000m 4.500m 5.000m 5.500m 6.000m 6.500m 7.000m 7.500m 8.000m 8.500m 9.000m 9.500m 10.000m 10.500m 11.000m 11.500m 12.000m 12.500m 13.000m 13.500m 14.000m 14.500m 15.000m 15.500m 16.000m 16.500m 17.000m 17.500m 18.000m 18.500m 19.000m 19.500m 20.000m 20.500m 21.000m 21.200m



# Assassins - Seating Plan + LX Grid

**Fixture Key**  
 Symbol Name Count

**Notes:**  
 Orange Bars are temporary scaff pipe  
 North to South LX Bars are at 5.3m  
 East to West LX Bars are at 5.35m trim

Technical Lead	Ray Powell
Client	Bold Theatre
Drawn By	Logan Cook
Dates	22/08/21 - 05/09/21
Printed	28/07/2021

**Version 1.0**  
**Version Notes**

1.0	Initial Drawing

Scale 1:100 @ A4

SOUTH

NORTH

WEST

EAST

