

## Technical Guide

### Key Contacts

Deborah Nudds – General Manager [deborah@themeteor.co.nz](mailto:deborah@themeteor.co.nz)

Emma Curphey – Marketing Assistant [emma@themeteor.co.nz](mailto:emma@themeteor.co.nz)

Guy Coker – Technical and Operations Manager [guy@themeteor.co.nz](mailto:guy@themeteor.co.nz)

James Smith – Technician [james@themeteor.co.nz](mailto:james@themeteor.co.nz)

Karena Hall – Operations Coordinator [karena@themeteor.co.nz](mailto:karena@themeteor.co.nz)

### Physical Address

The Meteor  
1 Victoria Street, Hamilton

### Mailing address

The Meteor PO Box 792  
Hamilton, Waikato 3204, New Zealand

### Website

<https://themeteor.co.nz/>

### Black box theatre dimensions

#### Floor

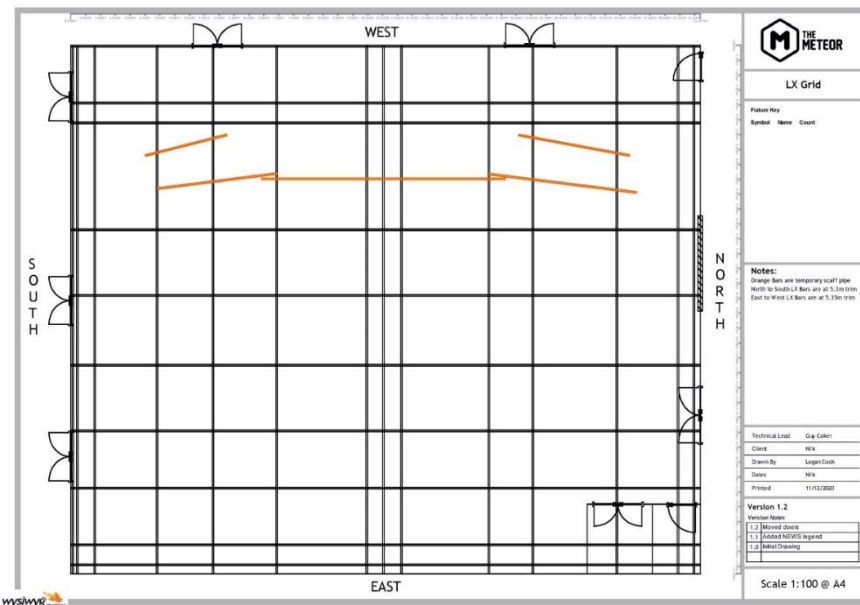
- North to South: 21m.
- East to West: 17m.

#### Structural beams

- North to South beams: 5.58m trim (these are upside down U beams).
- East to West beams are not suitable for rigging.

#### Lighting bars

- North to South trim: 5.3m.
- East to West trim: 5.35m.



The lighting grid has fixed bars, and we can supplement this with extra scaff if needed.

## Seating orientations

We have two 41-seat blocks available and one 50-seat block available for use. These are all fully moveable and can be used individually or in groups.

The 41-seat block has:

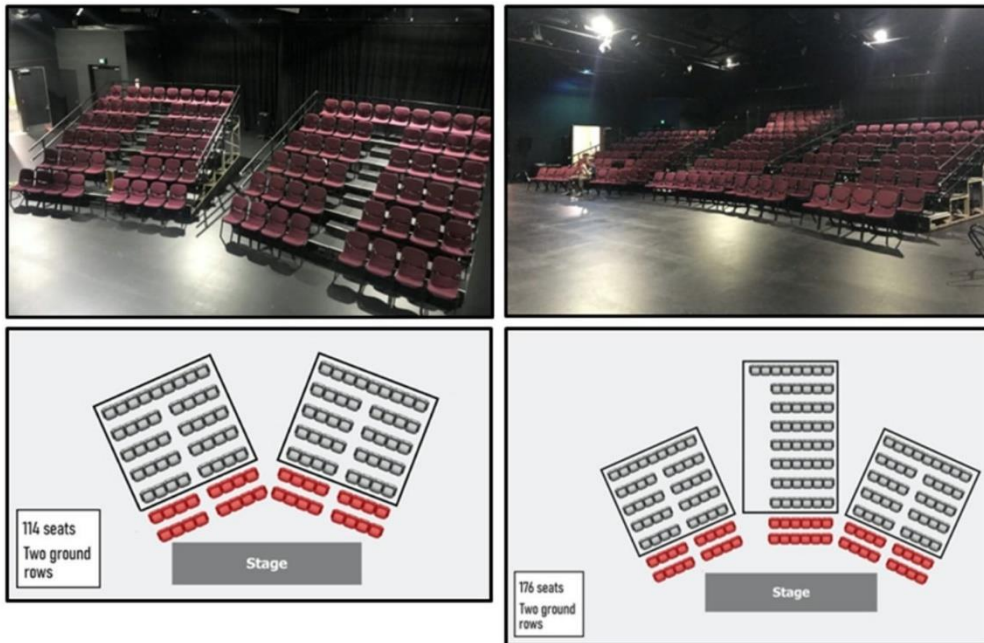
- 4 rows of 8 seats
- 1 row of 9 seats (top row)
- Height: 1500mm; width: 4800mm; depth: 4500mm
- 300mm step between levels
- Both blocks are on wheels
- These can be easily moved by 2 people

The 50-seat block has:

- 7 rows of 6 seats
- 1 row of 8 seats (top row)
- Height: 2450mm; width: 4130mm; depth: 7400mm
- 310mm step between levels
- 1 hour pack-in time with 4 people
- Once this block is in place, it is unable to move

Both seating blocks also have the optional extra of adding two ground rows of seating. This would bring the 41-seat block up to 57 seats total and the 50-seat block up to 62 seats total.

If you were to use all three seating blocks together, and the extra ground rows, then this would give you 176 seats. Please note that having three seating blocks is only possible in the standard rig and will incur an additional charge to set up.



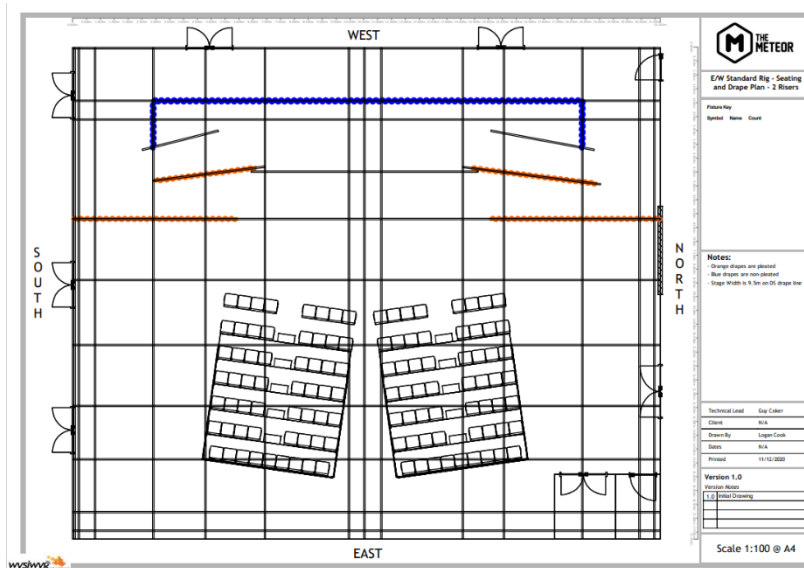
In total, we have 240 theatre chairs.

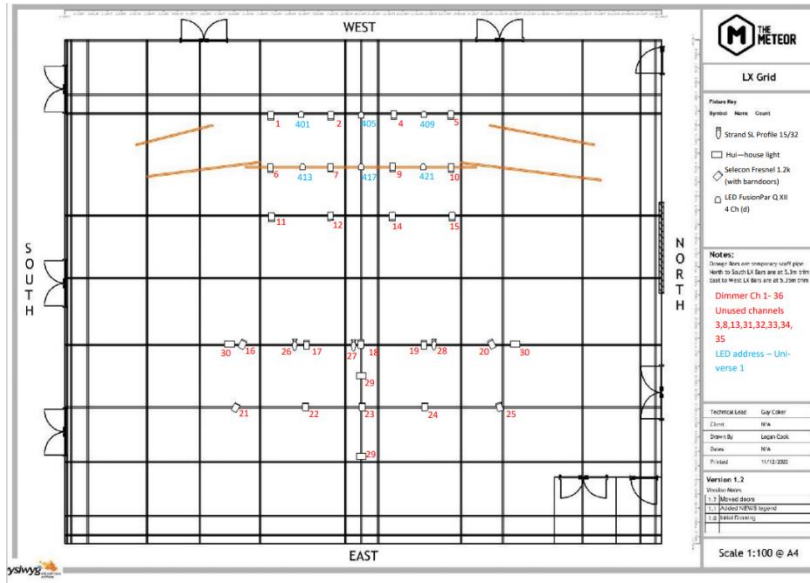
We also have large round tables that can be used to create a cabaret style configuration. The Meteor is licensed for a standing capacity of 350.

Alternatively, we can also create a smaller, more intimate, space for you e.g. there is a curtain track East to West in the center of the room which allows the space to be halved.

### Standard rig

Although The Meteor is a flexible black box space, meaning that your stage orientation can be in any direction, the standard rig for the theatre is with the stage along our West wall and the seating block along our East wall.





More plans can be accessed [here](#). Alternative layouts can be supplied on request.

If you're interested in deviating from the standard rig, then please let us know when enquiring for dates and we can work with you to create a plan – this may increase your pack in/out time needed.

The following technical equipment is included with your venue hire:

### Lighting

Control Equipment	Quantity	Notes
MSI GF63Thin Laptop	1	Runs Onyx Lighting Software
Martin M2Go Console	1	Used as interface for MSI Laptop

Fixtures	Quantity	Notes
Harmony PC – 1k	14	No Barndoors
LED PAR	6	
Pacific Profile 14/35	6	
Pacific Profile 5/14	2	
PAR Wide 64	16	
Selecon Fresnel – 1.2k	20	ALL used in our standard rig
Selecon Fresnel – 1k	26	
Selecon PC – 1.2k	2	
Strand SL Profile 15/32 – 600w	11	
Strand SL Profile 19 – 600w	2	
Strand SL Profile 26 – 600w	2	

Dimmers	Quantity	Notes
Theatre light 12 Channel – 32A	3	

Lighting Accessories	Quantity	Notes
Turtles	6	Wood, Black

## Audio

Equipment	Quantity	Notes
Allen&Heath Zed12 FX Mixing Desk	1	6 Channel Analogue Console
MIDAS M32R Digital Mixing Desk	1	32 channels with 6 return sends
MIDAS DL16 Digital Stage Box	1	Must be used with MIDAS digital mixing desk
30m Audio Snake	1	24 inputs, 6 returns
RCF HD 12 B Line Active Speaker	4	
Speaker Stands	4	
Shure SM58 Microphone	2	With mic clips
Shure SM57 Microphone	2	With mic clips
Whirlwind DI Box	2	
K&M Mic Stand	2	
Gravity Mic Stand (Short)	2	

Cable Equipment	Quantity	Notes
Audio Snake – 30m	1	
Power/Signal Cable – 20m	4	
Power/Signal Cable Extension – 10m	2	
3.5mm – stereo 6.5mm jack	2	
Cat6 – 50m	2	
Assorted XLR Cable		Contact technical team for availability of sizes

## Access Equipment

Equipment	Quantity	Notes
Rechargeable Genie Runabout	1	EWP License required to operate
Scaffold Tower on wheels	1	Users must be 16+ & a Meteor technical staff member must be onsite.

## Miscellaneous

Item	Quantity	Notes
Small Square Tables	4	
Trestle Tables	8	L: 1800 D: 750; Seats 6 People
Round Tables	8	D:1800; Seats 10 People
Round Table	8	D:1500; Seats 8 People
Black Metal Stools	6	
Operator Chairs	3	
Wooden boxes & plinths		Contact technical team for availability of sizes
Clothes Iron	1	Located in Green Room
Ironing Board	1	Located in Green Room
Steamer	1	Located in Green Room
Washing machine	1	Located in Workshop Washing Powder not provided

The following technical equipment is not included with your venue hire and will come with a charge:

### Playback

Equipment	Quantity	Notes
Macbook Pro 2015	1	QLab, licensed for audio and video, \$150 +GST

### AV

The below equipment comes as a \$350 +GST package for AV Hire and Installation.

Equipment	Quantity	Notes
Projector Screen - Front Projecting	1	H: 2700mm W: 4600mm
Panasonic 5k Projector	1	
Blackmagic SDI-HDMI	1	
Blackmagic HDMI-SDI	1	
HDMI Cable – 1m	2	
SDI – 30m	1	

### Effects

Equipment	Quantity	Notes
Martin Jem Compact Hazer Pro	1	\$160 +GST

### Staging

We charge \$150 +GST for a full 8 deck stage, or \$20 +GST per deck for smaller stages.

Equipment	Quantity	Notes
Riser Deck – 1200mm x 2400mm	8	
Riser Deck – 1000mm x 2700mm	8	
Riser Leg 900mm	32	
Riser Leg 600mm	32	
Riser Leg 300mm	32	
Riser Steps	2	
Stage skirt 800mm	1	
Stage skirt 600mm	1	
Stage skirt 400mm	1	

### Miscellaneous

Equipment	Quantity	Notes
Black Lectern	1	\$50 + GST
Gaff	As required	\$18.50 per roll
Gel	As required	Range of Rosco & Lee colours, contact team for stock info and price quote

If your event requires any extra gear e.g. a larger PA, backline, different staging, we have some local suppliers who work with us to get you the best gear for a great price.

Please let our technical team know if you would like a quote!